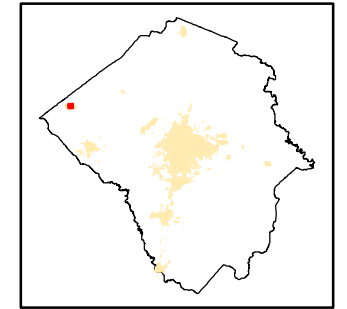







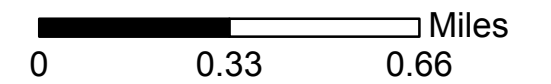
Pitt County  
Municipal E-911  
Addressing

# Fountain



## Legend

-  Road
-  City Limit
-  Extra-Territorial Jurisdiction
-  Tax Parcel
-  County Boundary



Map Scale:  
One Inch is Equivalent  
to 1/3 Mile

Map Produced By:  
Pitt County Planning Department



March, 2009

