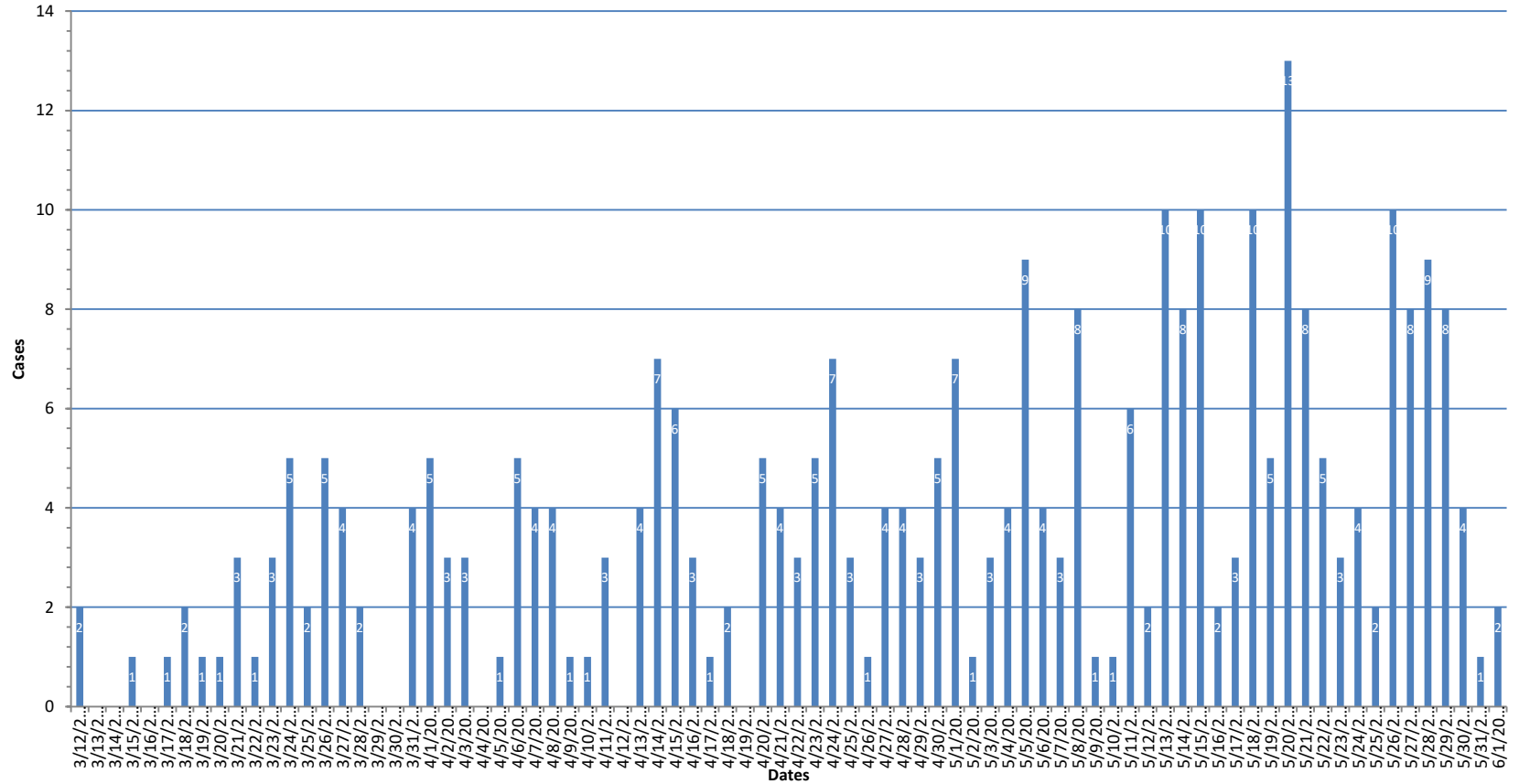
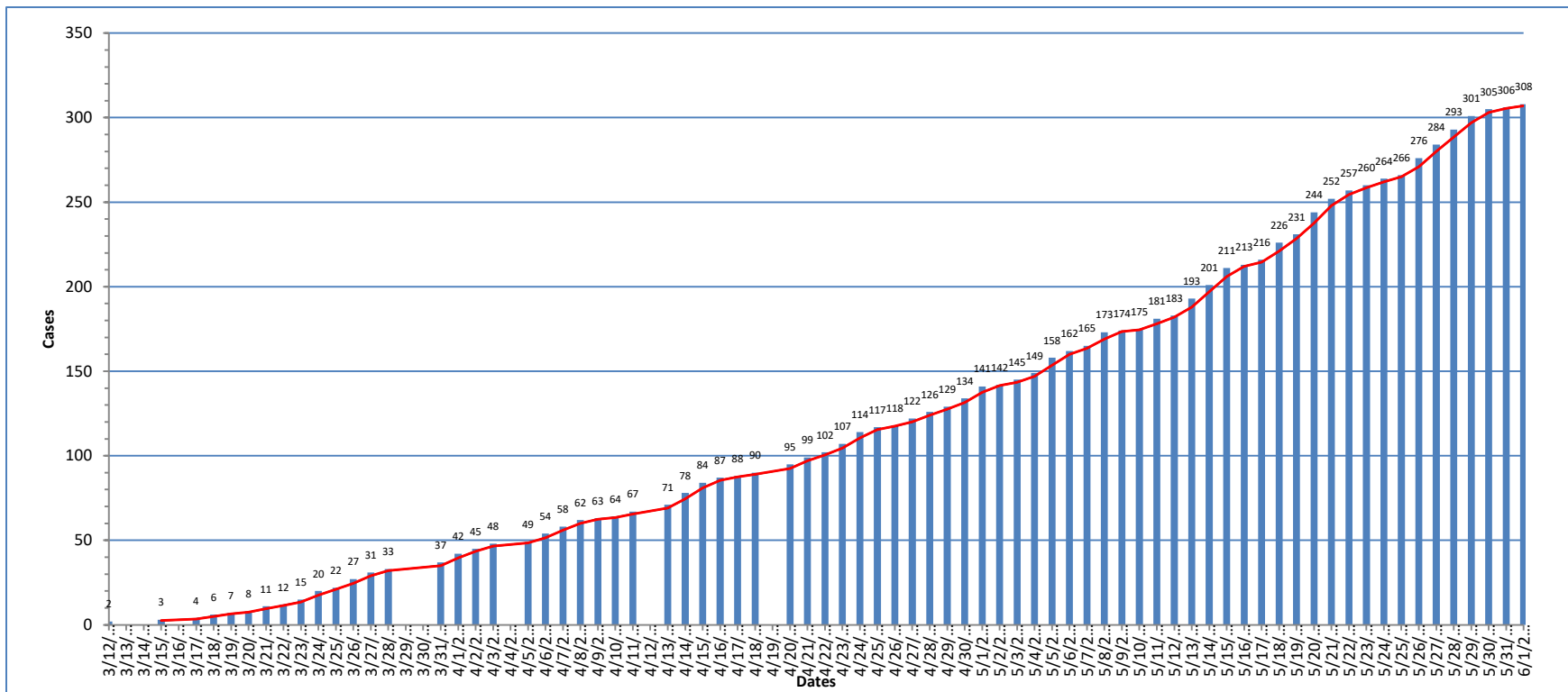


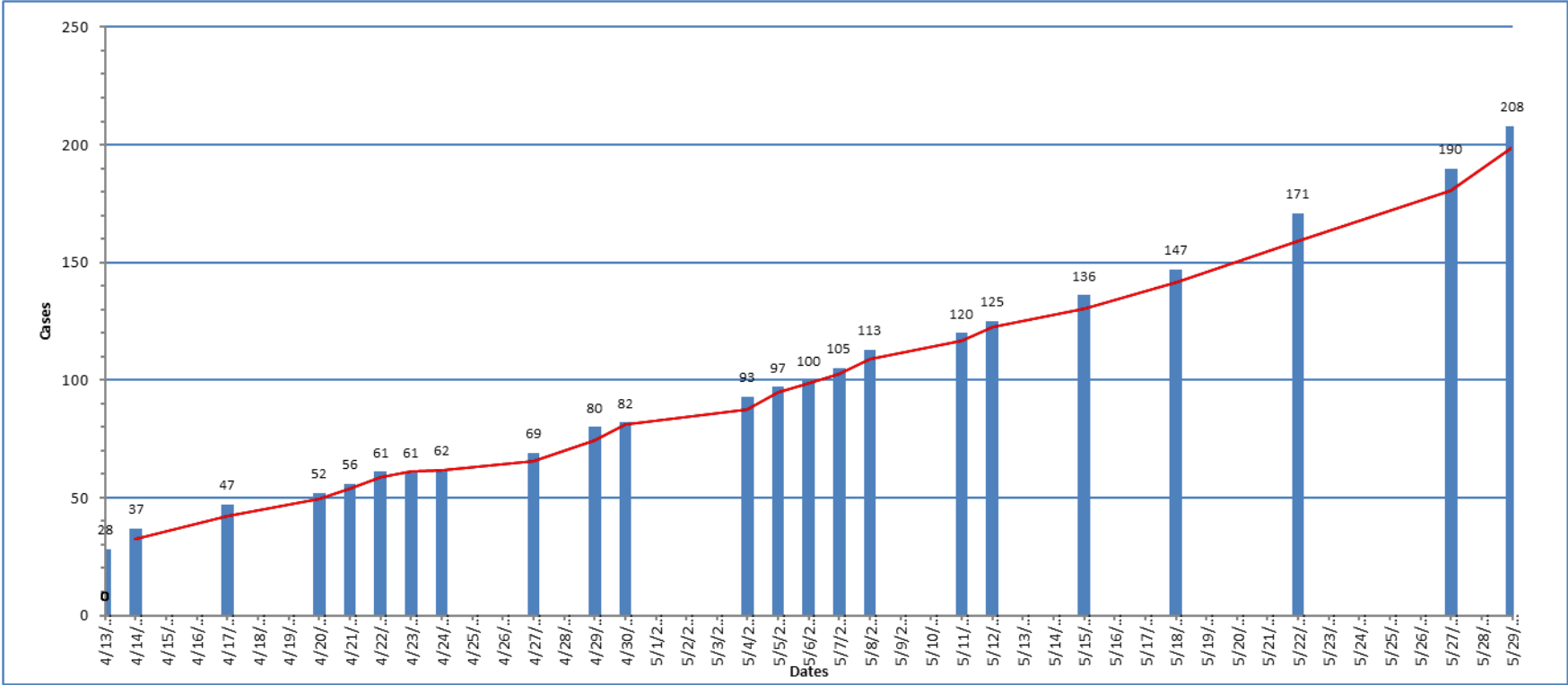
# Pitt County Number of COVID-19 Cases by Date of Specimen Collected



# Pitt County Cumulative Total Number of COVID-19 Cases by Date of Specimen Collected



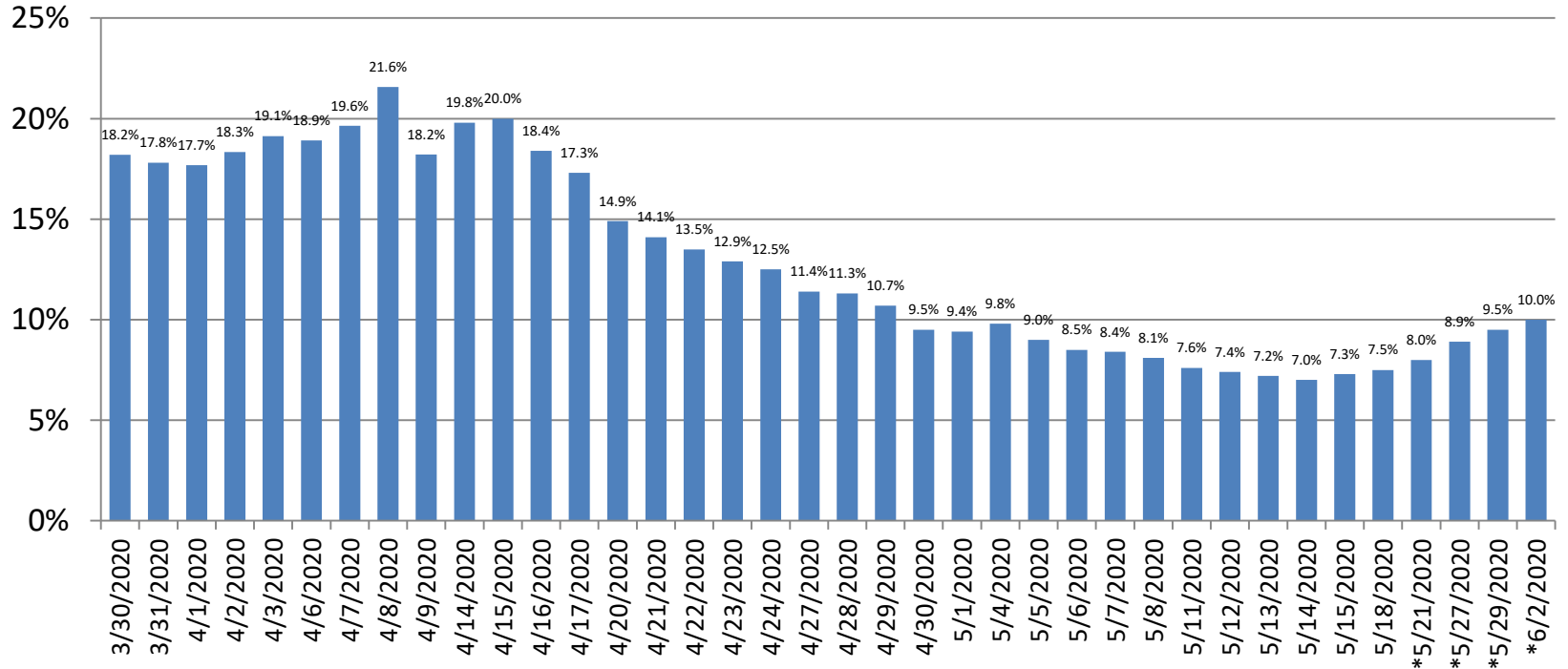
# Pitt County Cumulative Total Number of COVID-19 Estimated Recovered Cases as of May 29, 2020



# Pitt County COVID-19 Positive Tests As A Percent of Total Tests

## March 30, 2020 – June 02, 2020

**\*Note of Caution: The percentages calculated for May 19<sup>th</sup> - May 29<sup>th</sup> are not a true representation of the percent of positive tests among all tests performed. This calculation was based upon the total number of tests performed of which Pitt County Health Department has been notified. Negative tests are now being reported directly to NC DHHS instead of to individual counties and are not included in Pitt County's total test count. It is estimated that the percent of positive tests among all tests performed is lower beginning on May 19<sup>th</sup>.**



# Pitt County COVID-19 Test Results, Recovered and Deaths

## March 12, 2020 – May 29, 2020

**\*Note of Caution:** This graph only reflects the total number of tests performed of which Pitt County Health Department has been notified. It is estimated that the negative test count is much higher. Beginning on May 19<sup>th</sup> the majority of negative tests were reported directly to NC DHHS and not to individual counties. The positive test results, estimated recovered, and deaths reflected below are accurate.

