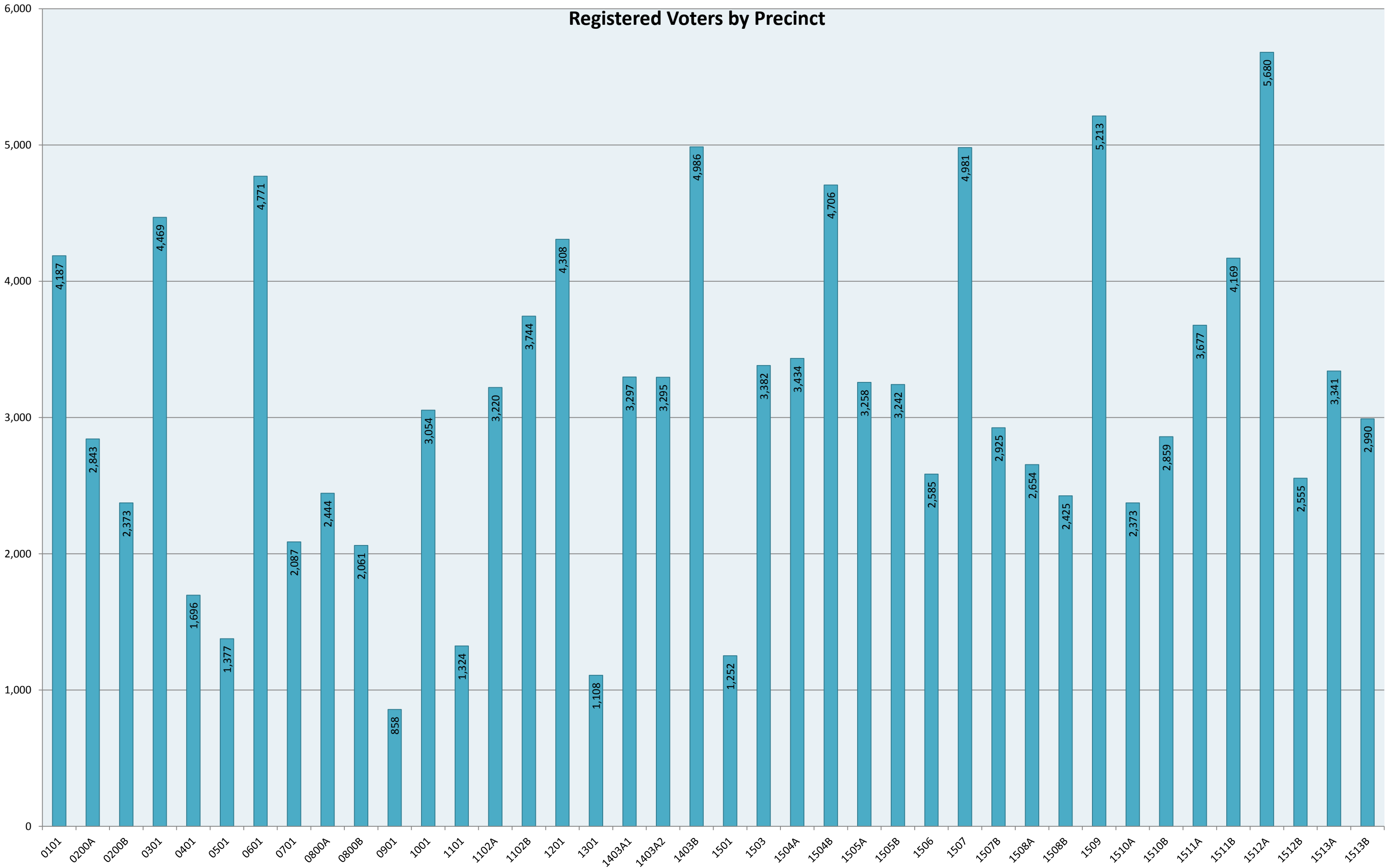
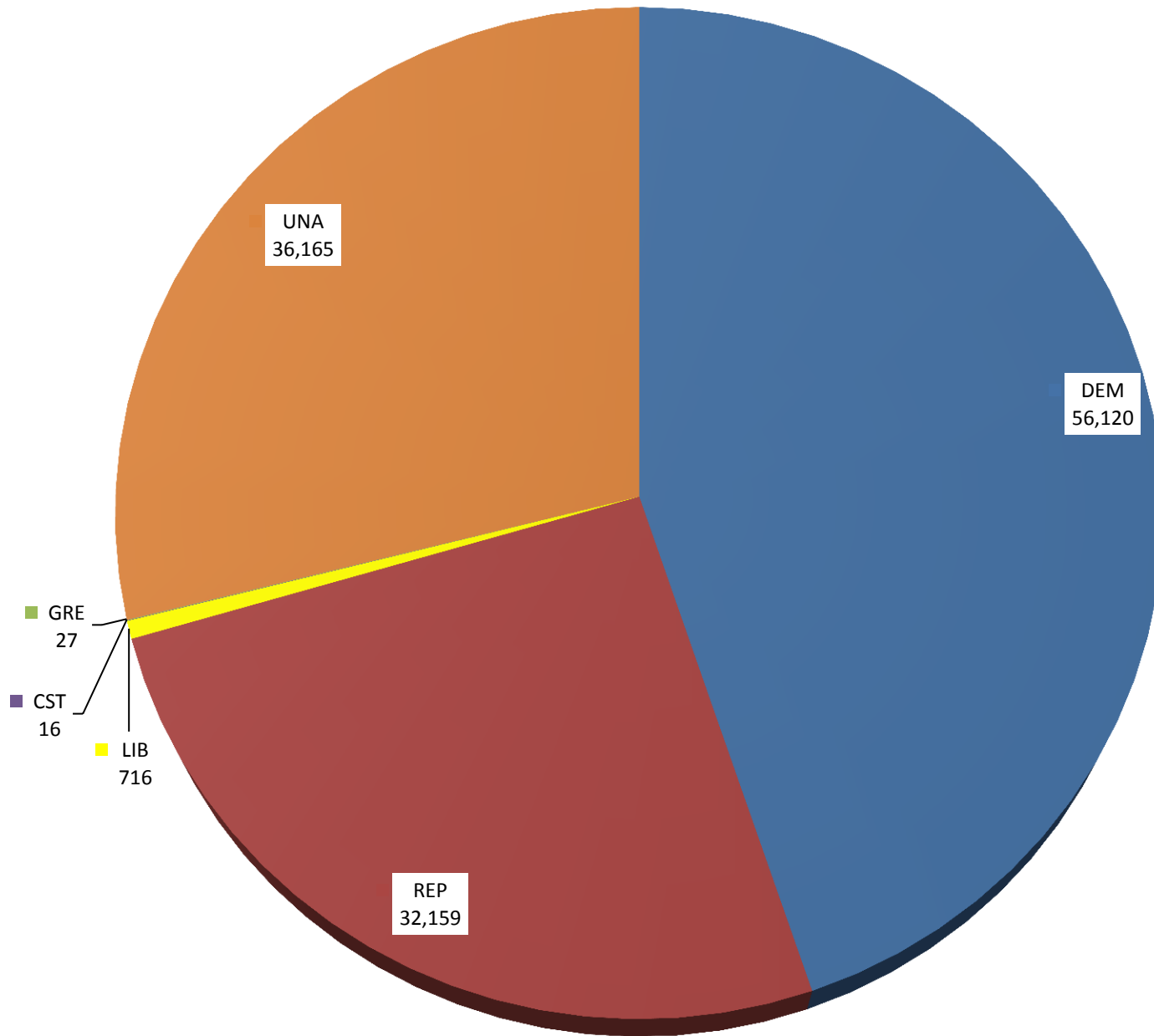


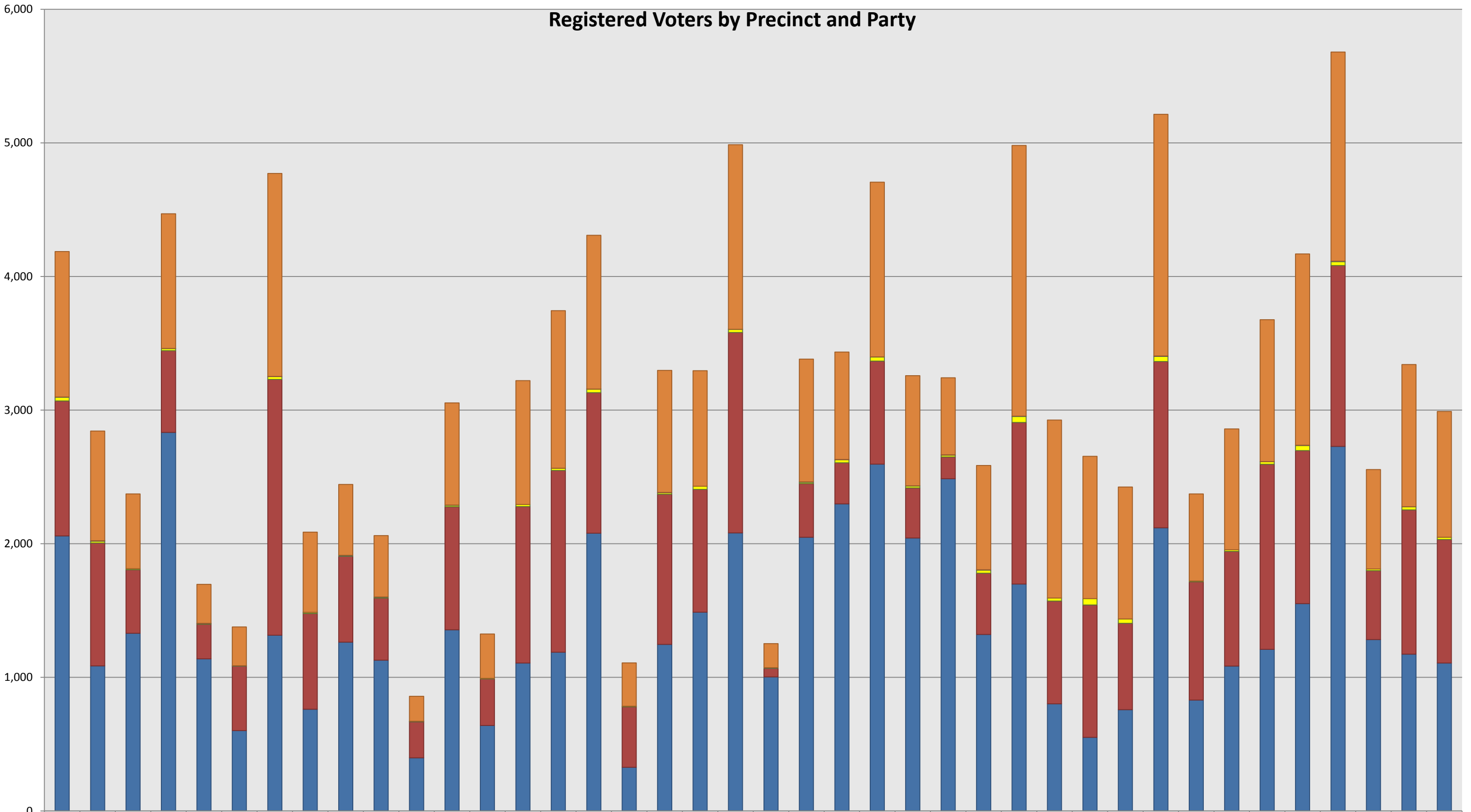
Registered Voters by Precinct



Registration by Party

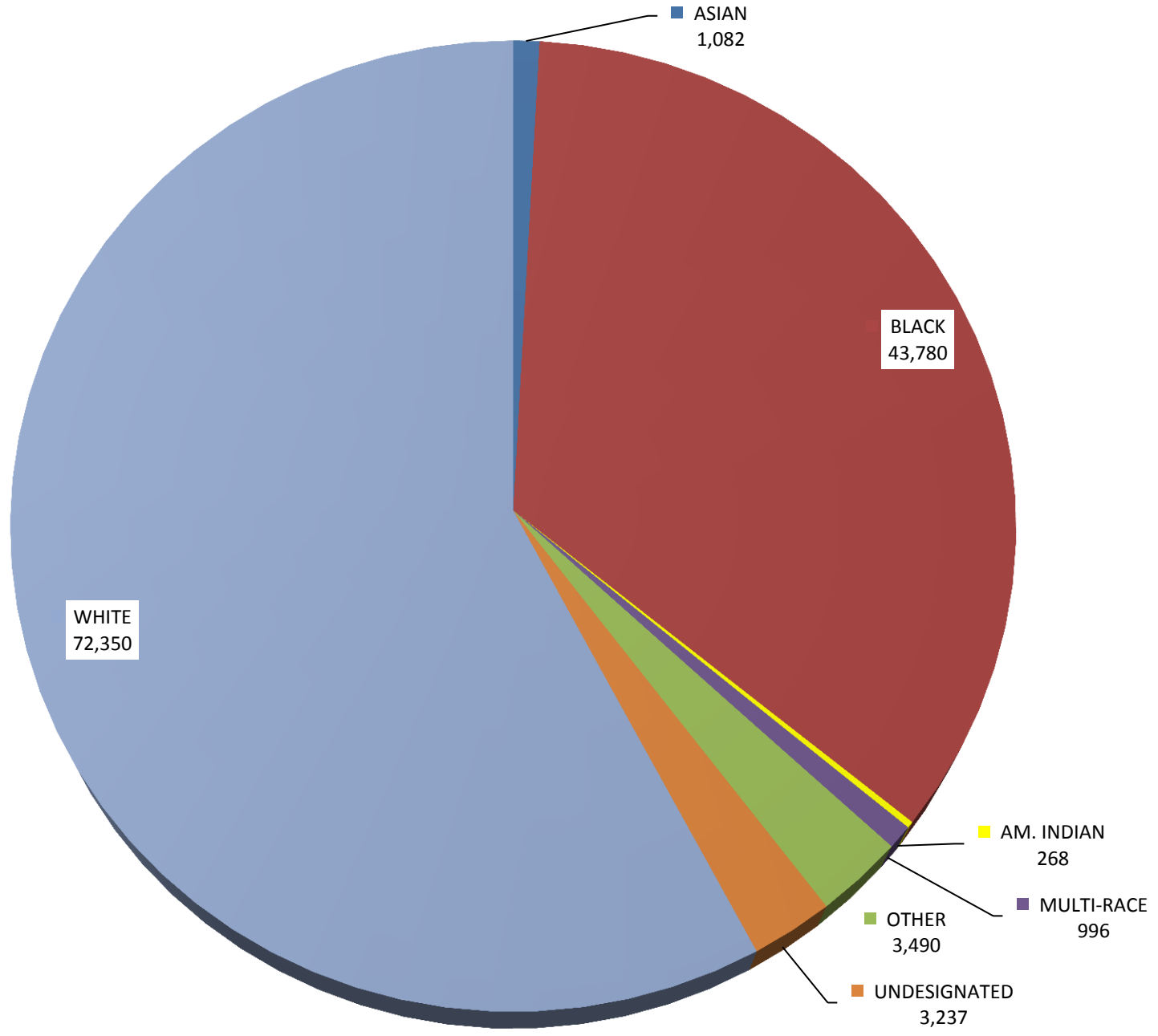


Registered Voters by Precinct and Party

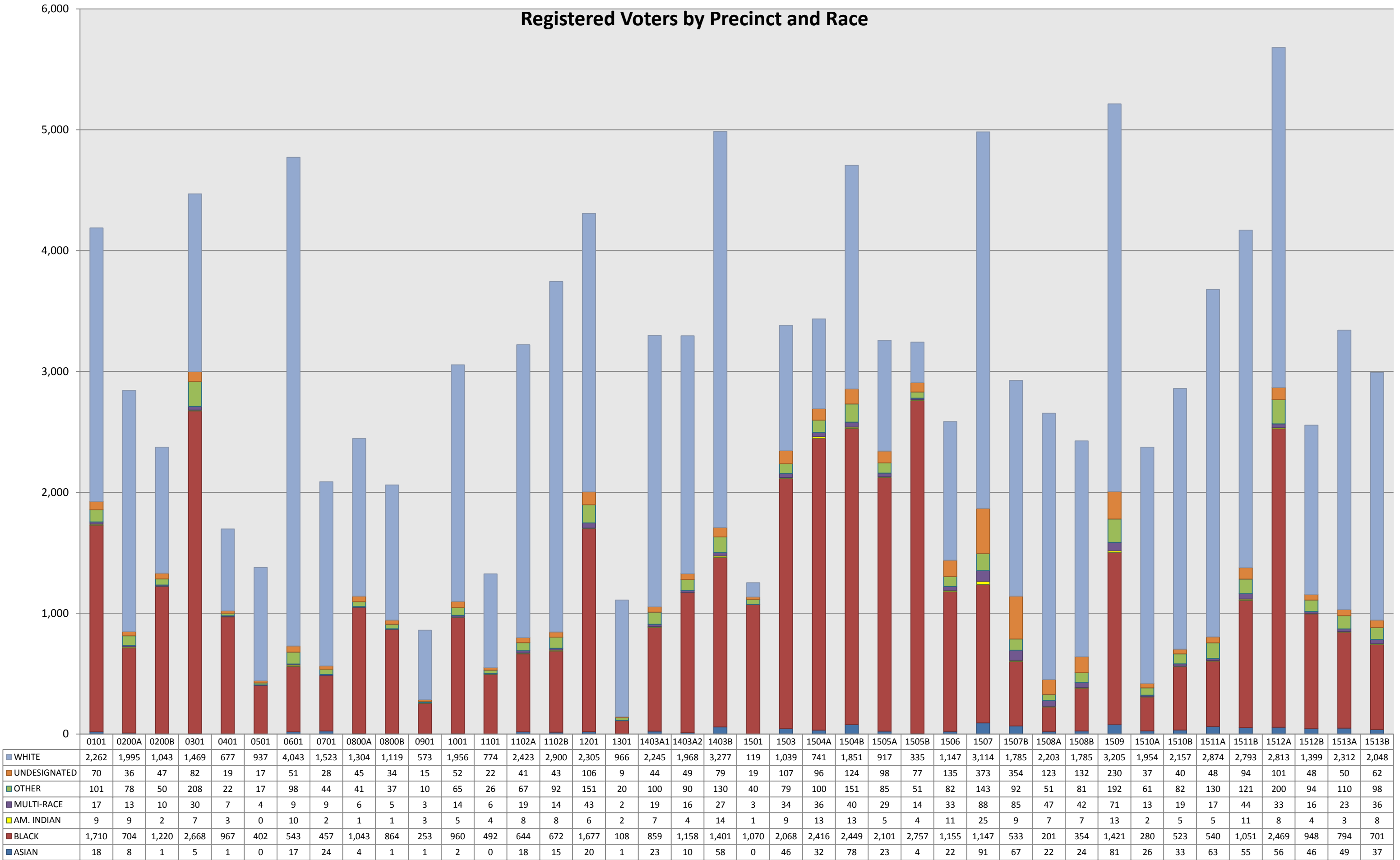


	0101	0200A	0200B	0301	0401	0501	0601	0701	0800A	0800B	0901	1001	1101	1102A	1102B	1201	1301	1403A1	1403A2	1403B	1501	1503	1504A	1504B	1505A	1505B	1506	1507	1507B	1508A	1508B	1509	1510A	1510B	1511A	1511B	1512A	1512B	1513A	1513B	
UNA	1,089	821	560	1,008	292	290	1,519	600	531	460	187	765	332	926	1,179	1,150	324	913	865	1,381	180	919	803	1,308	824	577	780	2,026	1,331	1,065	988	1,808	652	904	1,062	1,431	1,565	744	1,064	942	
GRE	1	1	0	1	0	1	0	1	2	1	0	1	0	0	0	0	0	0	0	1	1	3	0	1	2	0	0	0	0	0	0	1	0	0	0	1	4	0	1	0	
CST	0	1	0	0	1	0	1	0	0	0	1	0	0	0	1	1	0	1	0	0	0	2	0	0	0	2	1	0	0	0	0	0	1	0	0	1	2	0	0	0	0
LIB	28	14	8	15	5	2	22	8	5	7	3	11	4	16	16	27	5	13	23	23	3	10	23	30	14	13	24	46	23	47	33	39	6	12	19	38	29	13	23	16	
REP	1,010	920	475	612	259	482	1,914	717	642	464	269	921	348	1,171	1,360	1,051	452	1,123	919	1,500	65	402	308	771	375	164	458	1,209	769	991	646	1,245	885	859	1,385	1,145	1,353	515	1,080	925	
DEM	2,059	1,086	1,330	2,833	1,139	602	1,315	761	1,264	1,129	398	1,356	640	1,107	1,188	2,079	327	1,247	1,488	2,081	1,003	2,048	2,298	2,596	2,043	2,486	1,321	1,698	802	551	758	2,119	830	1,084	1,210	1,552	2,729	1,283	1,173	1,107	

Registration by Race

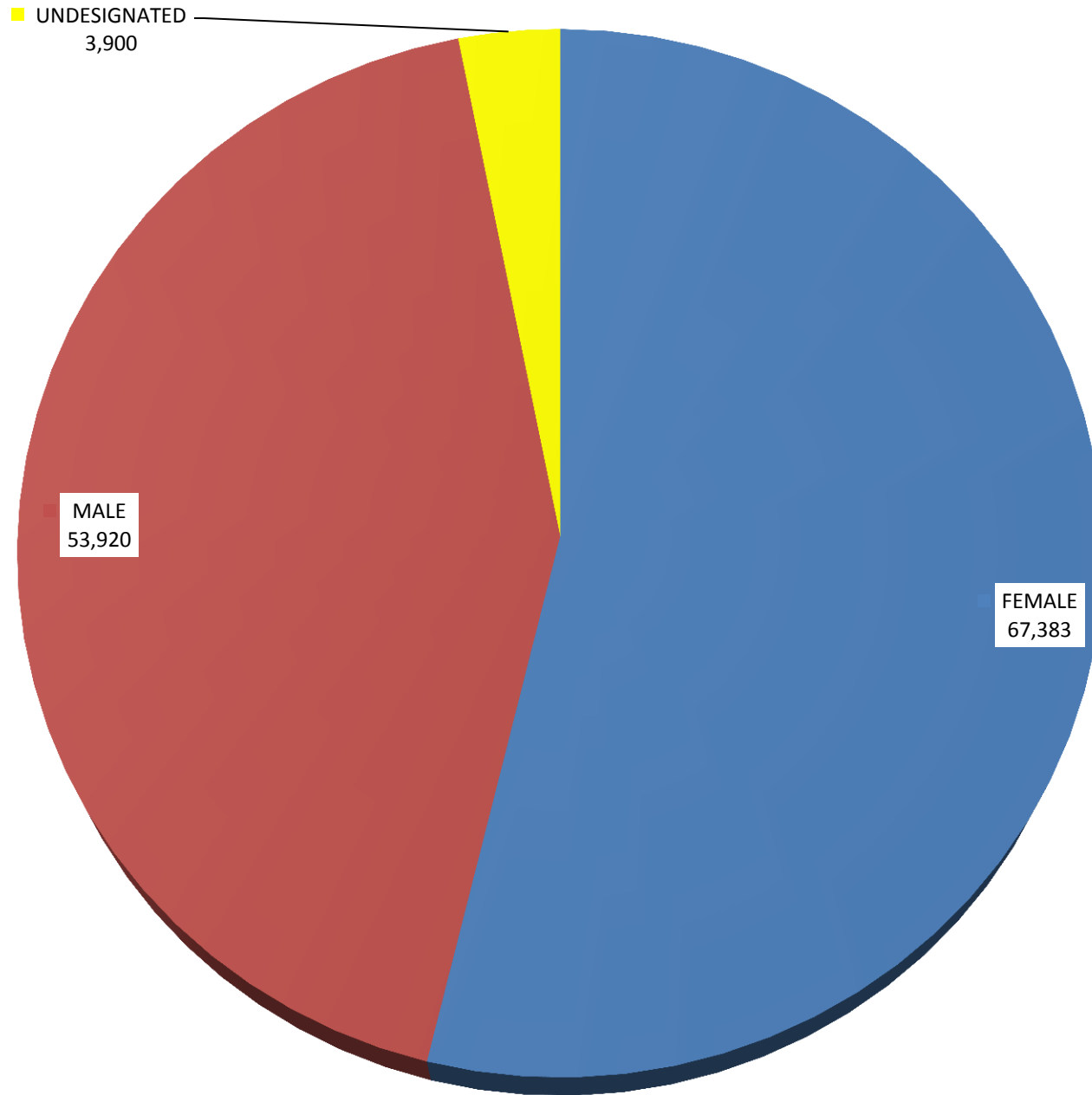


Registered Voters by Precinct and Race

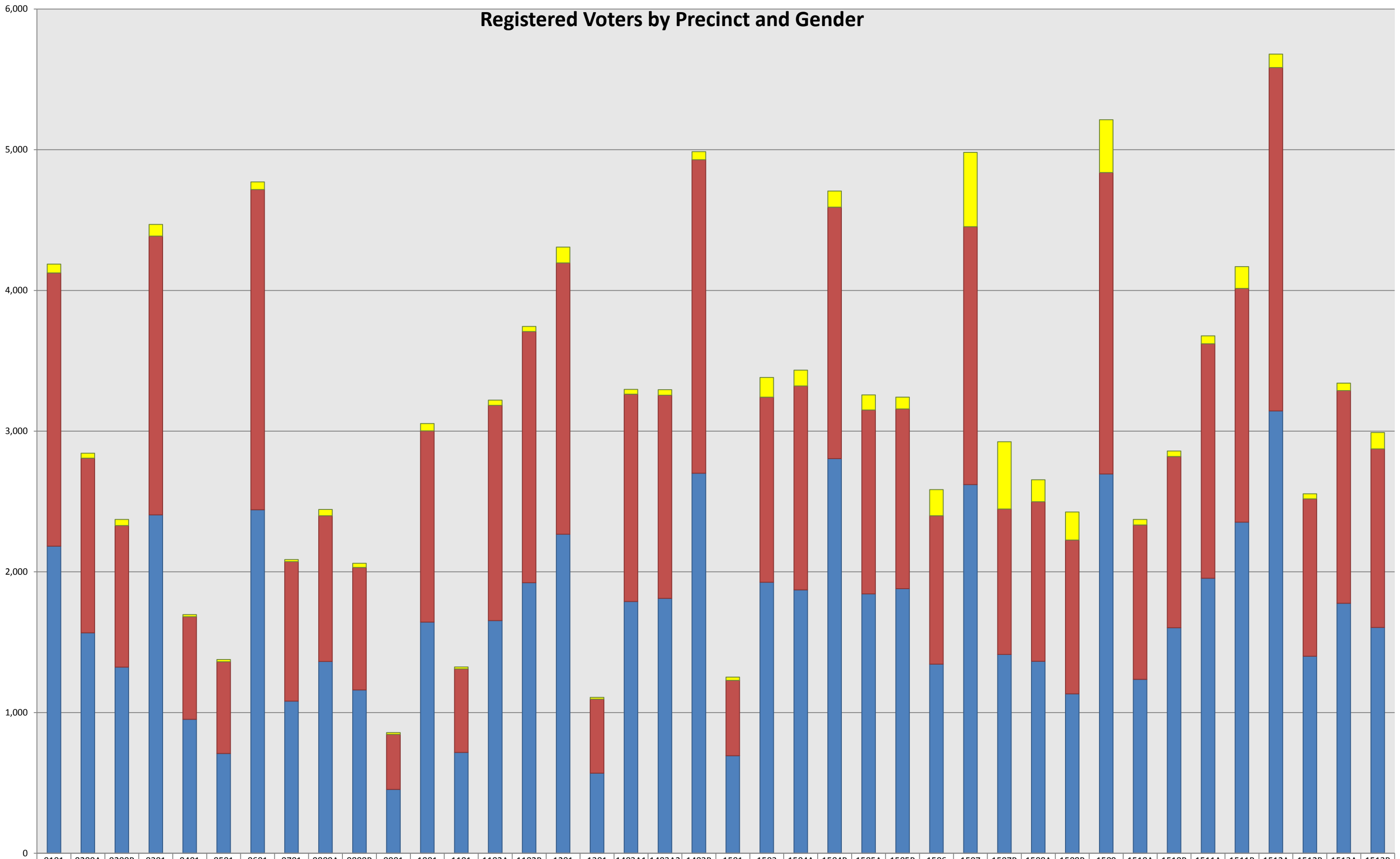


ASIAN BLACK AM. INDIAN MULTI-RACE OTHER UNDESIGNATED WHITE

Registration by Gender

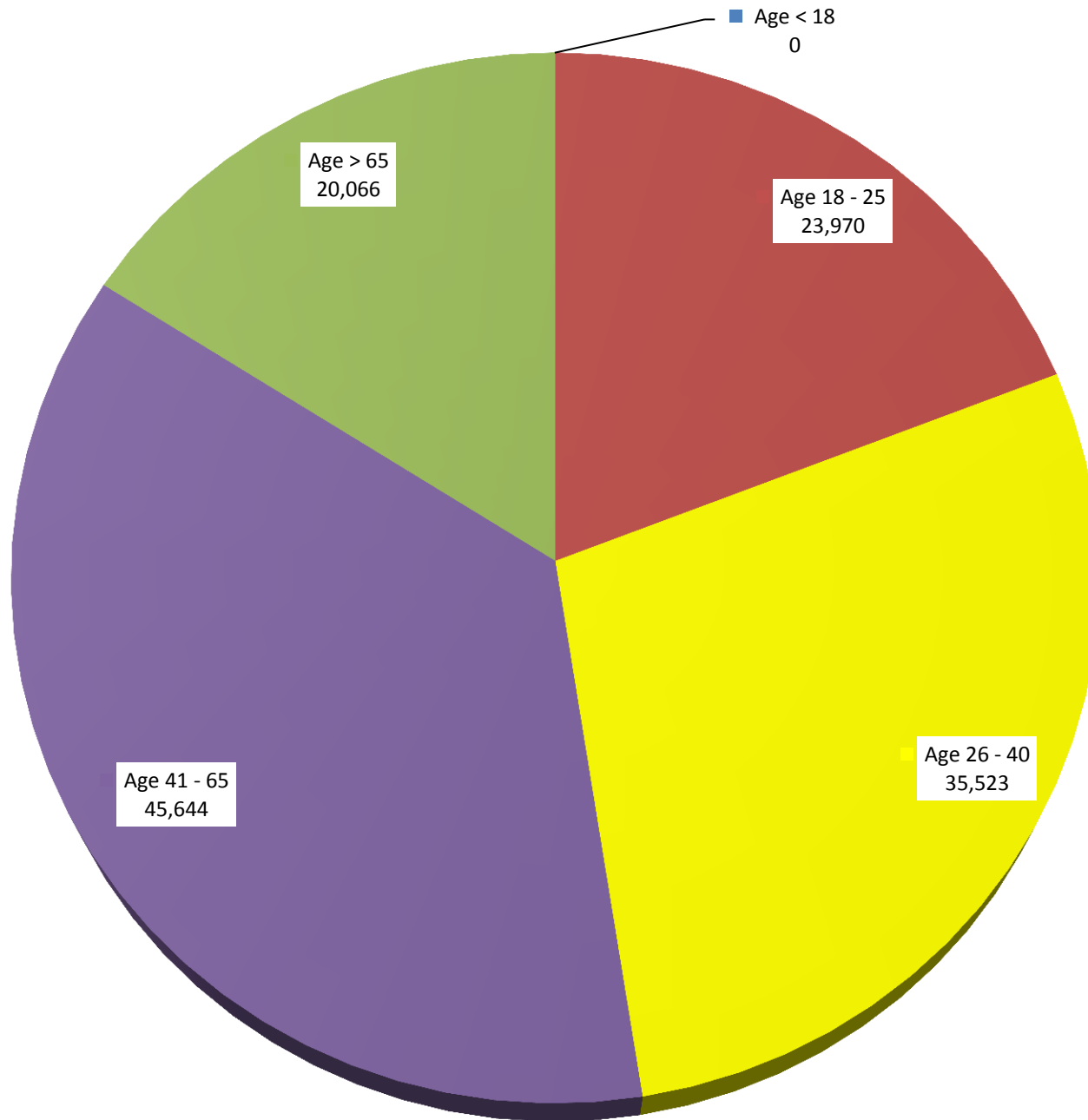


Registered Voters by Precinct and Gender

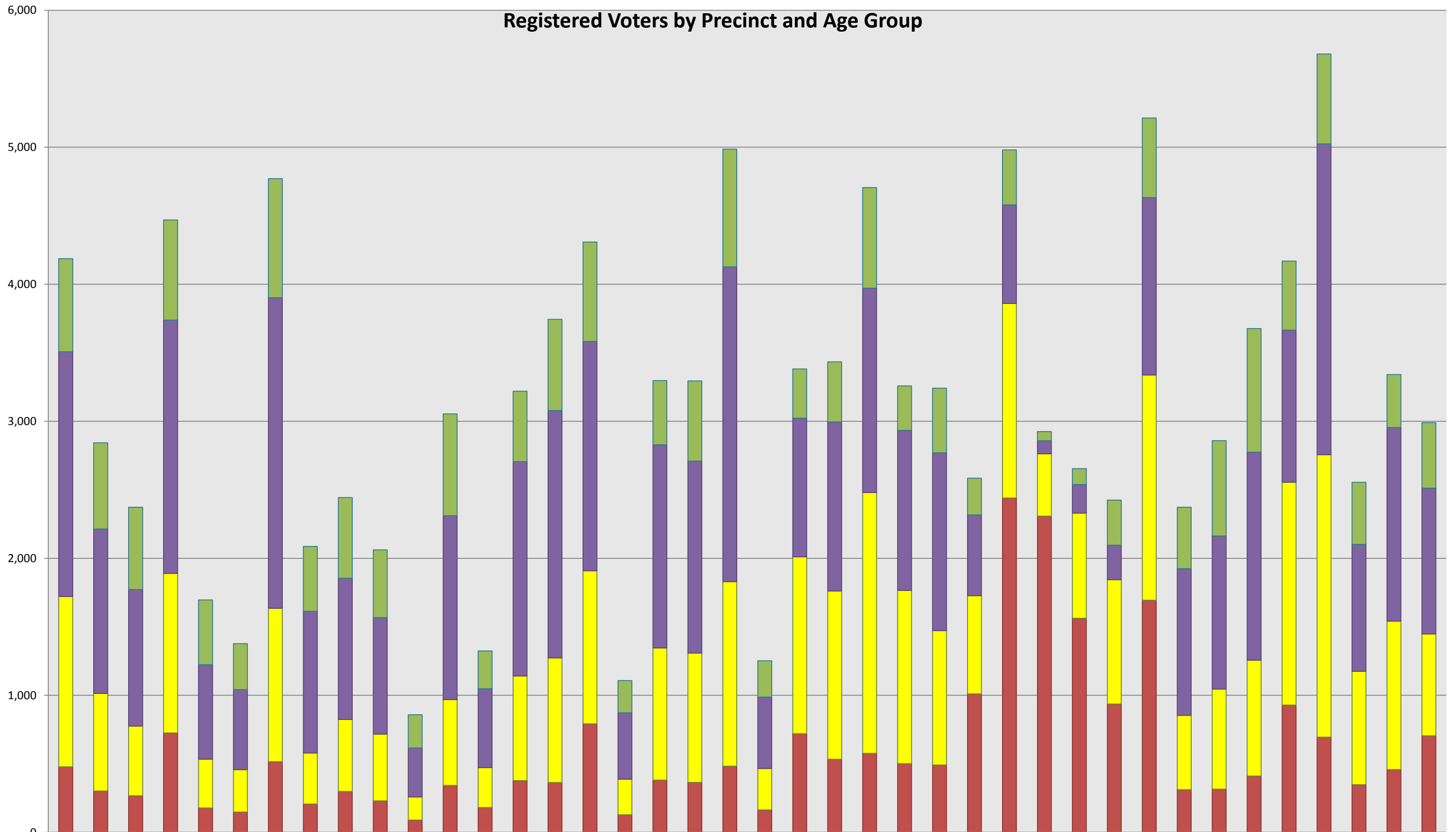


	0101	0200A	0200B	0301	0401	0501	0601	0701	0800A	0800B	0901	1001	1101	1102A	1102B	1201	1301	1403A1	1403A2	1403B	1501	1503	1504A	1504B	1505A	1505B	1506	1507	1507B	1508A	1508B	1509	1510A	1510B	1511A	1511B	1512A	1512B	1513A	1513B
UNDESIGNATED	62	35	44	83	15	16	54	15	45	30	13	52	14	37	36	112	13	34	40	57	23	140	113	114	107	84	186	528	478	155	199	375	40	39	56	155	96	36	53	116
MALE	1,942	1,241	1,006	1,981	729	652	2,276	990	1,036	870	391	1,359	593	1,529	1,785	1,928	525	1,474	1,443	2,228	535	1,316	1,449	1,787	1,307	1,277	1,055	1,833	1,034	1,135	1,093	2,142	1,097	1,217	1,666	1,661	2,440	1,118	1,511	1,269
FEMALE	2,183	1,567	1,323	2,405	952	709	2,441	1,082	1,363	1,161	454	1,643	717	1,654	1,923	2,268	570	1,789	1,812	2,701	694	1,926	1,872	2,805	1,844	1,881	1,344	2,620	1,413	1,364	1,133	2,696	1,236	1,603	1,955	2,353	3,144	1,401	1,777	1,605

Registration by Age



Registered Voters by Precinct and Age Group



	0101	0200A	0200B	0301	0401	0501	0601	0701	0800A	0800B	0901	1001	1101	1102A	1102B	1201	1301	1403A1	1403A2	1403B	1501	1503	1504A	1504B	1505A	1505B	1506	1507	1507B	1508A	1508B	1509	1510A	1510B	1511A	1511B	1512A	1512B	1513A	1513B	
Age > 65	679	629	601	731	472	336	869	474	589	494	242	743	276	515	666	725	235	468	586	859	265	359	439	735	324	472	269	401	66	116	329	580	448	696	902	503	655	454	386	478	
Age 41 - 65	1,786	1,200	997	1,849	691	584	2,267	1,034	1,031	850	357	1,342	575	1,564	1,805	1,674	485	1,483	1,400	2,297	521	1,012	1,234	1,491	1,168	1,298	589	720	96	208	252	1,295	1,071	1,117	1,518	1,111	2,269	926	1,413	1,064	
Age 26 - 40	1,244	712	508	1,163	355	309	1,119	372	526	487	169	626	292	763	909	1,117	260	965	944	1,347	302	1,291	1,227	1,903	1,265	980	716	1,420	455	767	907	1,644	542	731	846	1,626	2,061	827	1,083	743	
Age 18 - 25	478	302	267	726	178	148	516	207	298	230	90	343	181	378	364	792	128	381	365	483	164	720	534	577	501	492	1,011	2,440	2,308	1,563	937	1,694	312	315	411	929	695	348	459	705	
Age < 18	0	0	0	0	0	0	0	0	0	0	0	0	0	0	0	0	0	0	0	0	0	0	0	0	0	0	0	0	0	0	0	0	0	0	0	0	0	0	0	0	0